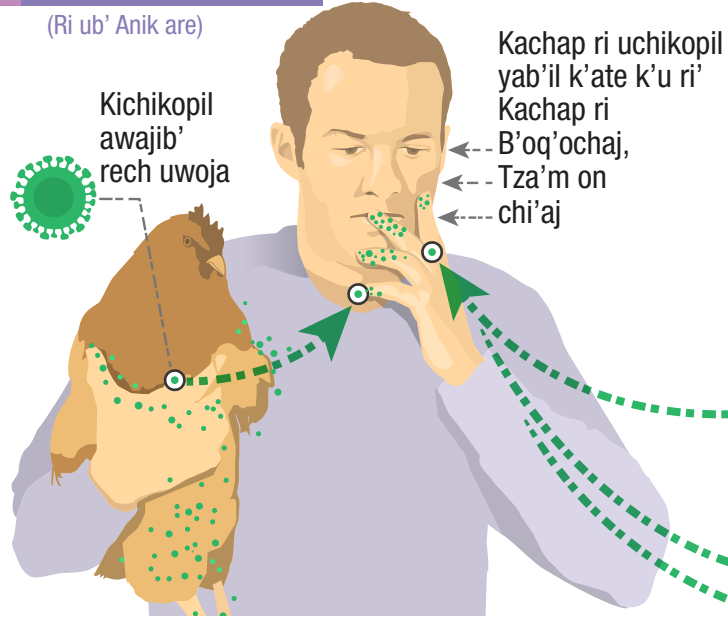


Jas Kkib'an Ri Awajib' Rech Uwoja Che Uq'axexik Le K'osib'al Tew Kech Awajib' Chi Kech ri Ewinaq Man e k'i taj ri ewinaq kkiriq k'osib'al tew re ak' xa ne', k'o wi' le yab'il

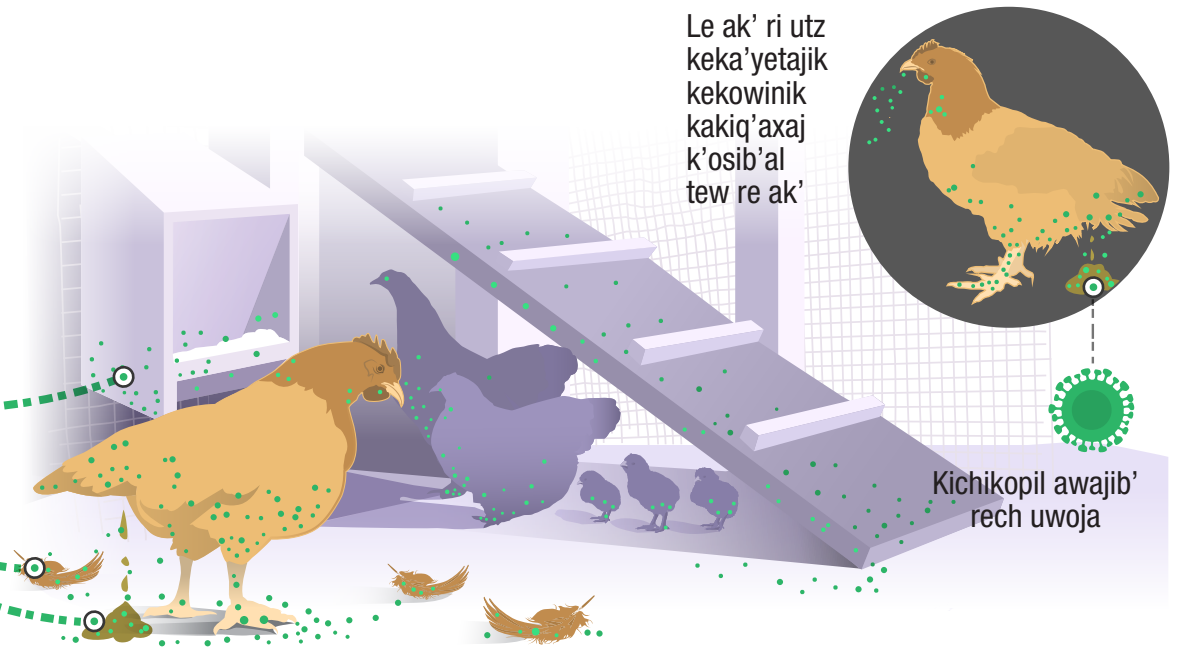
1 Ch'awem Kuk'

(Ri ub' Anik are)

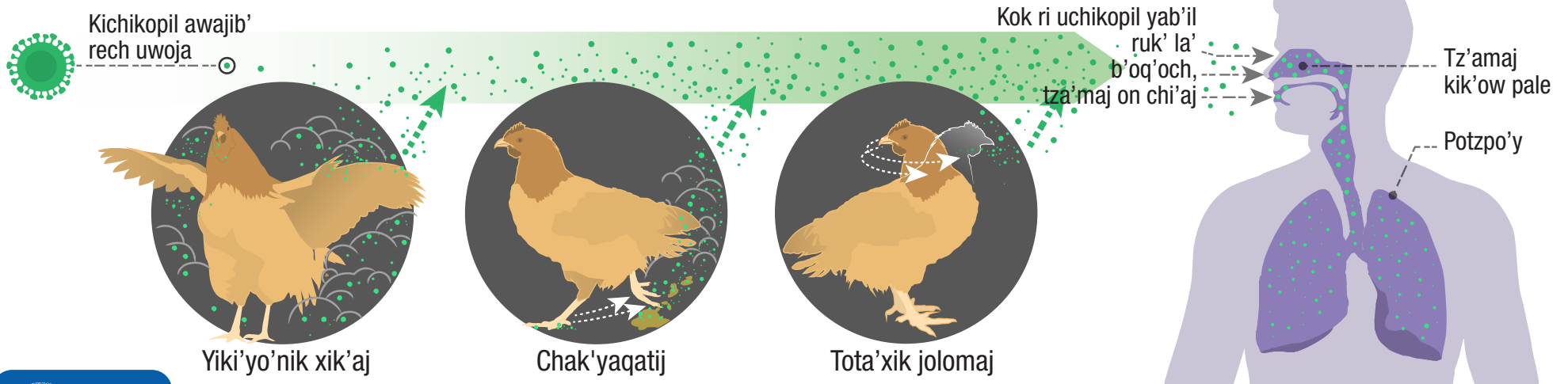


Kaq'ax wi le yab'il, rajawaxik taj kachap ri awajib' rech uwoja.

2 Jastaq k'o uchikopil yab'il chech



3 Q'axinem pa kaqiq' kichikopil awajib' rech uwoja (ukojik pa tz'ut on xaq kjopixik)



U.S. Department of Health and Human Services
Centers for Disease Control and Prevention

www.cdc.gov/flu/avianflu/avian-in-humans.htm

Man e k'i ta ri ewinaq echapatajinaq rumal ri Kichikopil awajib' rech uwoja xa ne', k'o wi' le yab'il. Konojel winaq ri kiriqom yab'il rumal ri k'osib'al tew re ak' q'axenaq chi kech xa rumal kiriqom kib' ruk' jastaq jawje' maj kichajinik, kuk' eyowab' taq ak' on Jastaq k'o uchikopil yab'il chi kech. We jun uxaq wuj kuya' ub'ixik on kuq'alajisaj ri k'osib'al tew re ak' xuquje' jas uq'axexik kb'an le yab'il chke taq ewinaq.

K'osib'al Tew Re Ak' Chke Enik'aj Ak' Awajib' Chik

Le nik'aj ak' re ja' (ja cha' epatax on eyuq patax) xuquje' kakiriq uchikopil yab'il (k'osib'al tew) re ak' (ak' awajib'), xa ne' man keyowaj taj. Ri eyowab' ak' awajib', k'o uchikopil yab'il pa le kichub', tz'amaj xuquje' pa ri kichul (kimes). Ri uchikopil k'osib'al tew re ak' aninaqil kuq'axaj rib' chke enik'aj chik ak'. K'o jujun uchikopil yab'il sib'alaj k'ax kb'an chke ak' xuquje' kukamisaj ak' re choja (ja cha' ak', patax xuquje' no's).

K'osib'al Tew re Ak' Chke Ak' re Koral

Ri ak' re choja (ak', no's, patax, ja cha' enik'aj chik) kakiriq ri kichikopil awajib' rech uwoja A, ruk' uriqik kib' kuk' eyowab' taq ak' re ja' on eyowab' taq ak' rech uwoja, xuquje' uriqik kib' ruk' jastaq ri uriqom uchikopil yab'il re k'osib'al tew. Ri kichikopil awajib' rech uwoja jun nima't yab'il chi kech ak' rech uwoja xuquje' rajawaxik aninaq rilik on ukunaxik xa rumal sib'alaj aninaq kuq'axaj rib' xuquje' kakowinik kukamisaj ak'. Le patanijem solinik re utzwachil ke awajib' xuquje' re ichaj (APHIS) kachakun kuk' ri erachi'l wokaj, re tinamit, ri aj waral xuquje' kuk' enimaq taq wokaj che uq'atexik ri uk'axk'olil le k'osib'al tew re ak'. Uwach ri kichikopil awajib' rech uwoja A(H5) on A(H7) xuquje' kech ak' rech uwoja, jawje' kakopix kiwach (on kekamsaxik, xuquje' ub'i "k'axk'olil re utzwachil") pa ri jupuq ak' echapatajinak pa yab'il.

Q'axinem uchikopil yab'il kech ak' ch kech ri ewinaq.

Man e k'i ta ri winaq kakiriq ri yab'il re ak' xa ne' k'o wi' le yab'il. Ri uchikopil kech ri ak' kkowinik kaq'ax chi kech ri winaq are taq ri uchikopil

kuriq rib' on kok pa le b'oq'ochaj, ri tza'maj on pa le chi'aj, xuquje' are taq kajik' uxlab'al. We ri', kk'ulmatajik are taq ri uchikopil k'o pa kaqiq' (jacha' jun tz'ut on kajopixik) we k'o jun winaq kujik'o, on we k'o jun winaq kuchap jastaq k'o uchikopil yab'il che xuquje' kchap uchi', ub'oq'och o utz'am. (chawila' ri wachib'al k'o chirij). Konojel winaq ri kiriqom yab'il rumal ri k'osib'al tew re ak' are rumal kiriqom kib', sib'alaj naj xuquje' jawje' maj kichajinik kuk' eyowab' ak' on Jastaq k'o uchikopil yab'il chi kech. Ri eyowab' taq winaq rumal we yab'il k'osib'al tew kech ak', utz kekunaxik on kakitij ri kunub'al ucholajim ri kunanel chke ri ewinaq ri kiriqom k'osib'al tew re winaq. Kb'ixik chi ri ewinaq man kiriqom ta kib' kuk' eyowab' taq ak' on jastaq k'o uchikopil yab'il che, sib'alaj eta'matalik chi man keyowaj taj on man kakiriq taj le yab'il. Kb'ixik chi ri ewinaq ri kiriqom kib', sib'alaj naqaj xuquje' maj kichajinik kuk' eyowab' ak' on jastaq k'o uchikopil yab'il che sib'alaj k'o nim uk'axk'olil chi kech (te'q ruk' la'j uchikopil) yab'ilal.

Man ya'om ta ub'ixik we ek'o winaq kiriqom ri k'osib'al tew re ak' rumal le utz uchapik le ti'j ak' b'anom, on rumal utijik ak' on rikil re ak' ri utz utzakik b'anom.

Uwach ri k'osib'al tew re ak' awajib'.

Kuriqana jumal kawachin ri k'osib'al tew re ak' chikixo'l ak' awajib'. Are taq kawachin ri k'osib'al tew re ak' awajib' pa ri koral re nima tinamit re ch'aqap ja', ri wokaj re tiko'nijik re ch'aqap ja' (USDA) kachakun ruk' ri erachi'l wokaj, re tinamit xuquje' enik'aj chik tob'anelab' rech uq'atex uwach xuquje' rech man kachikon taj chke enik'aj chik ak' re koral. Ri utz k'amb'al ucholajil re k'ak'alenik xuquje' resaxik are: kk'ulk'ub'ej ri kachoch ri e k'o naqaj on kiriqom kib' kuk' ri eyowa'ib' xuquje' kiq'atik ri eyowab' taq chi etz'apitalik pa kawinaq q'ij xuquje' kikamsexik ri ak' we k'o yab'il chi kech. Ri wokaj re k'ak'alenik xuquje' q'atenik yab'il kechakun kuk' etob'anelab' che uchajixik ri utzwachil re tinamit cho ri uwach ri yab'il. Ko'l ri uxib'ib'al le k'osib'al tew re ak' chke ri ewinaq; xa ne', rumal chi ek'o nik'aj chik uchikopil k'osib'al tew re ak' ri ut'iqon winaq. Kab'antajik kakiriq wi, ri yab'il rumal we uchikopil taq yab'il.



**U.S. Department of
Health and Human Services**
Centers for Disease
Control and Prevention

Q'alajisamen re k'osib'al tew re ak' k'o pa www.cdc.gov/flu/avianflu